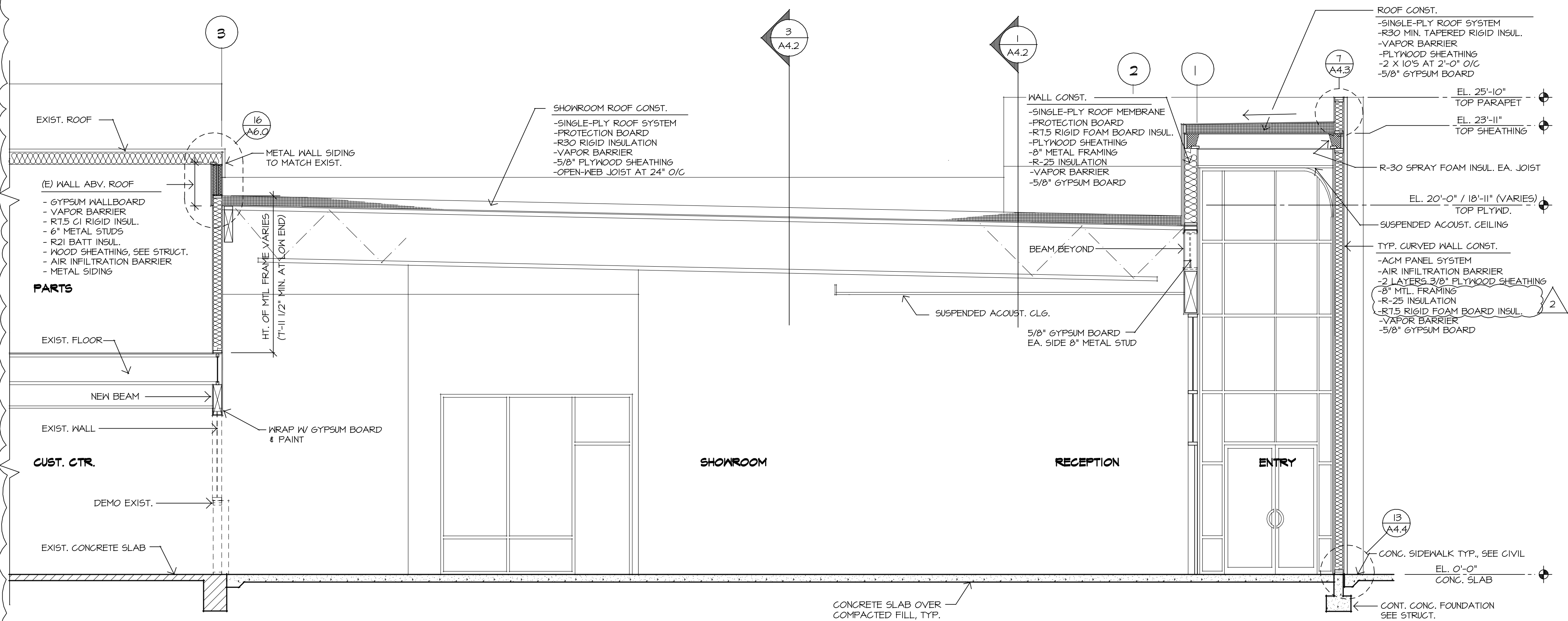
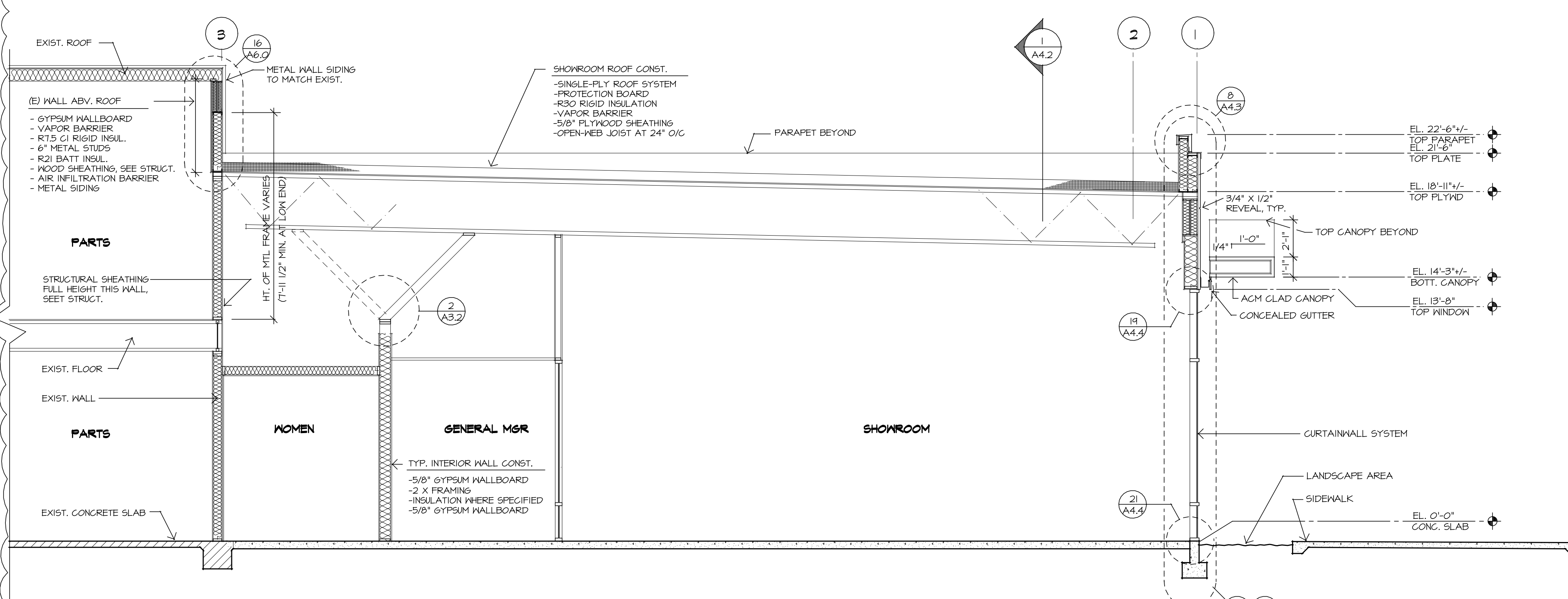


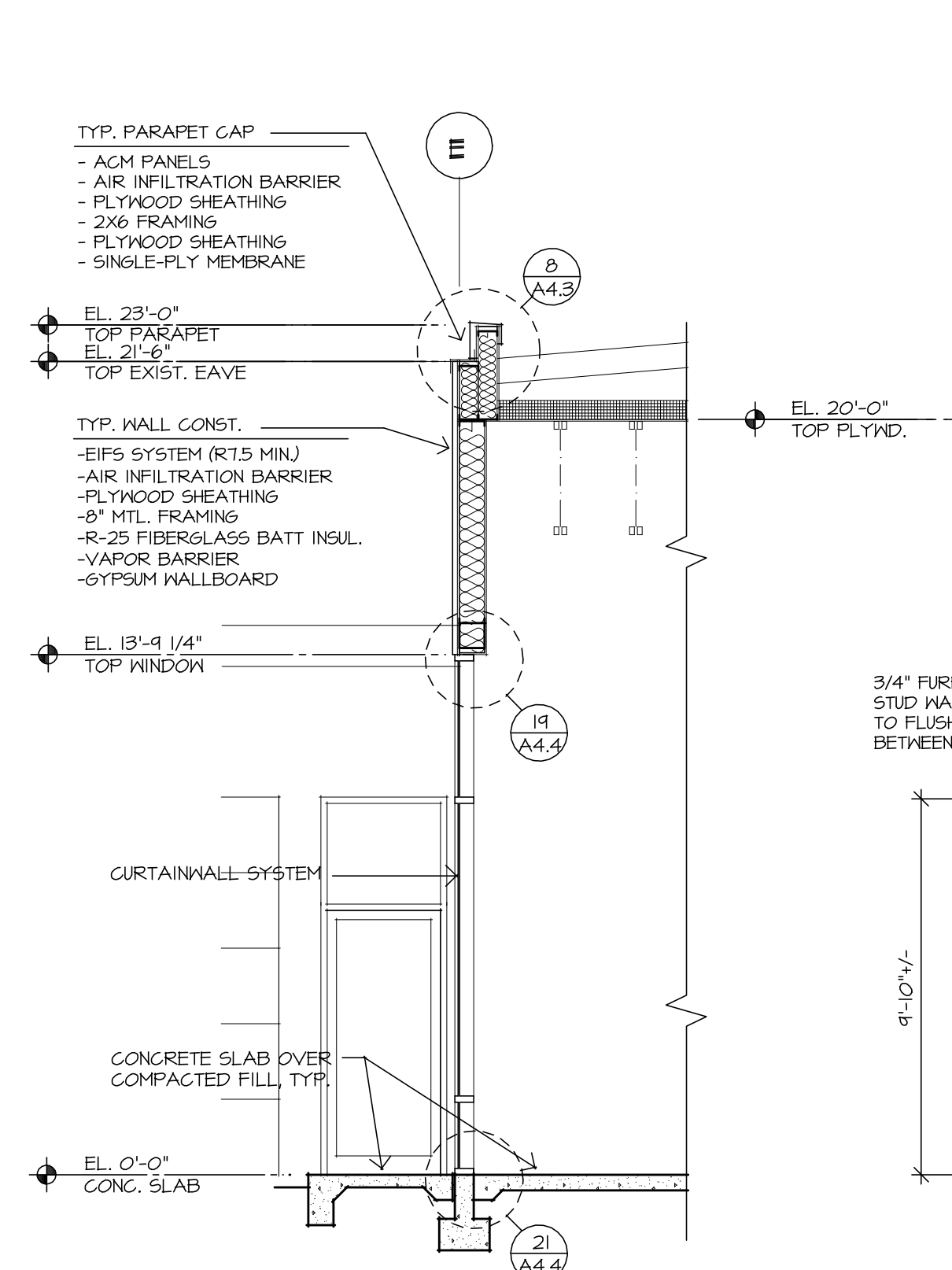
1 BUILDING SECTION
A4.2



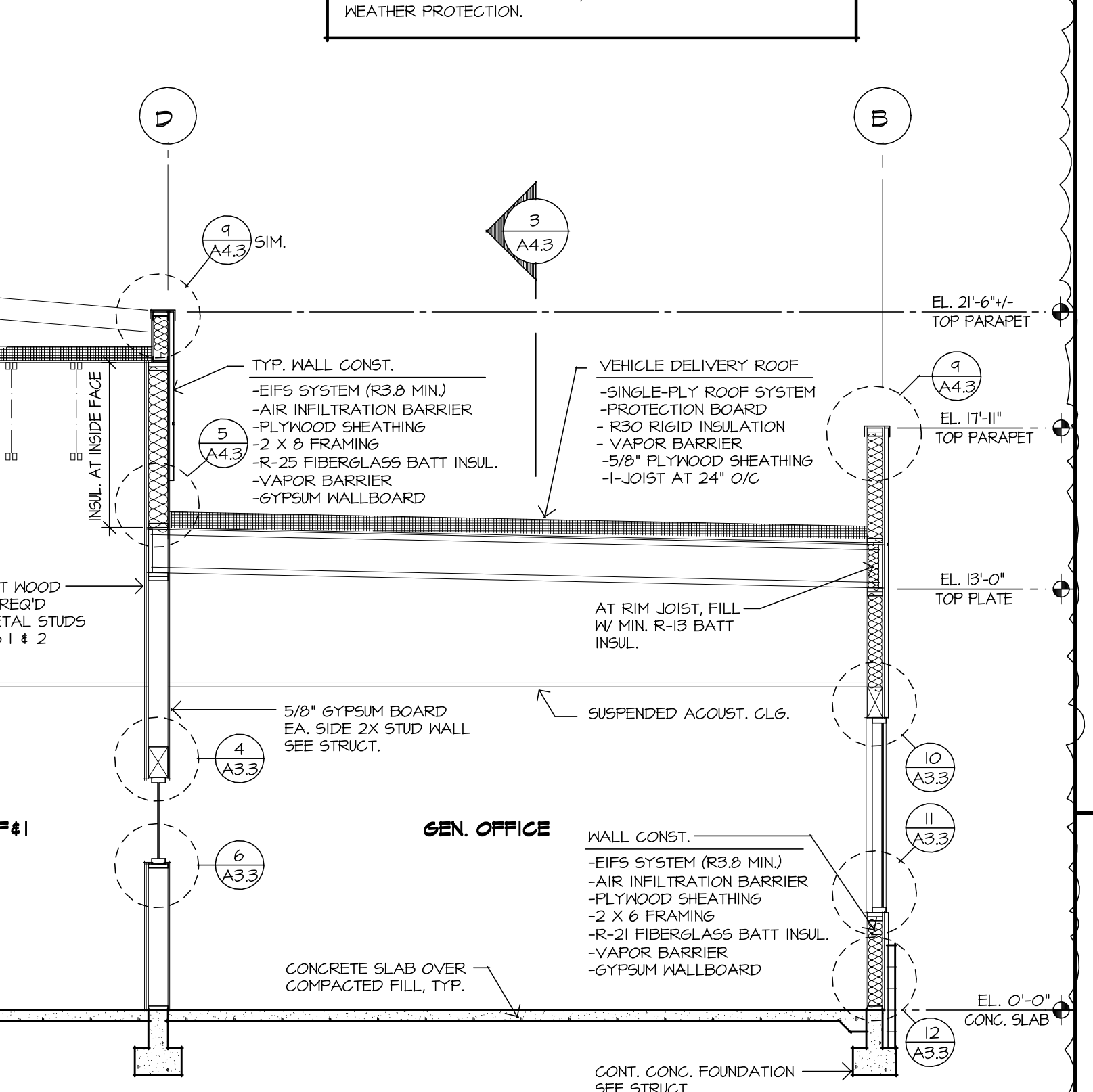
2 BUILDING SECTION
A4.2



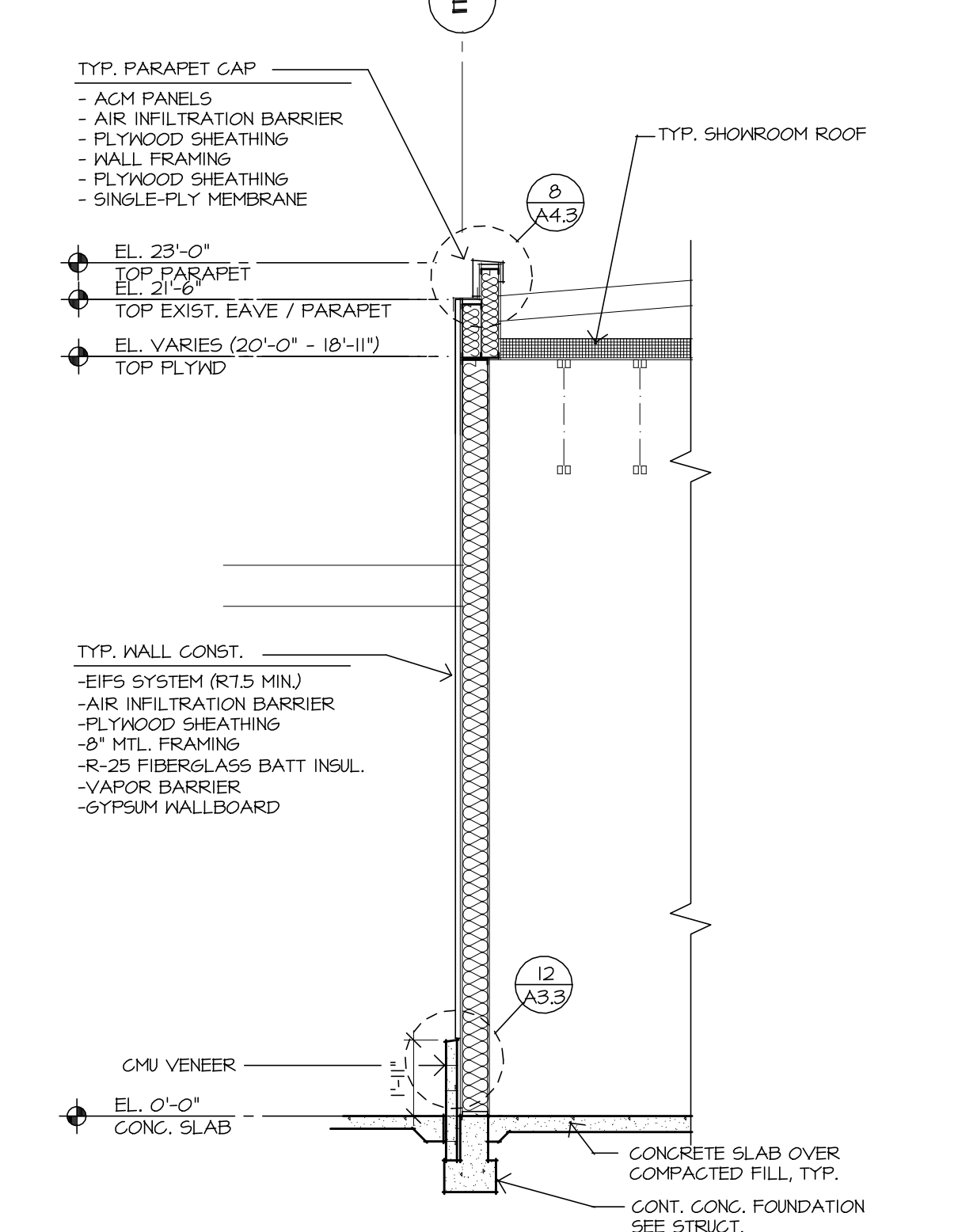
4 BUILDING SECTION
A4.2



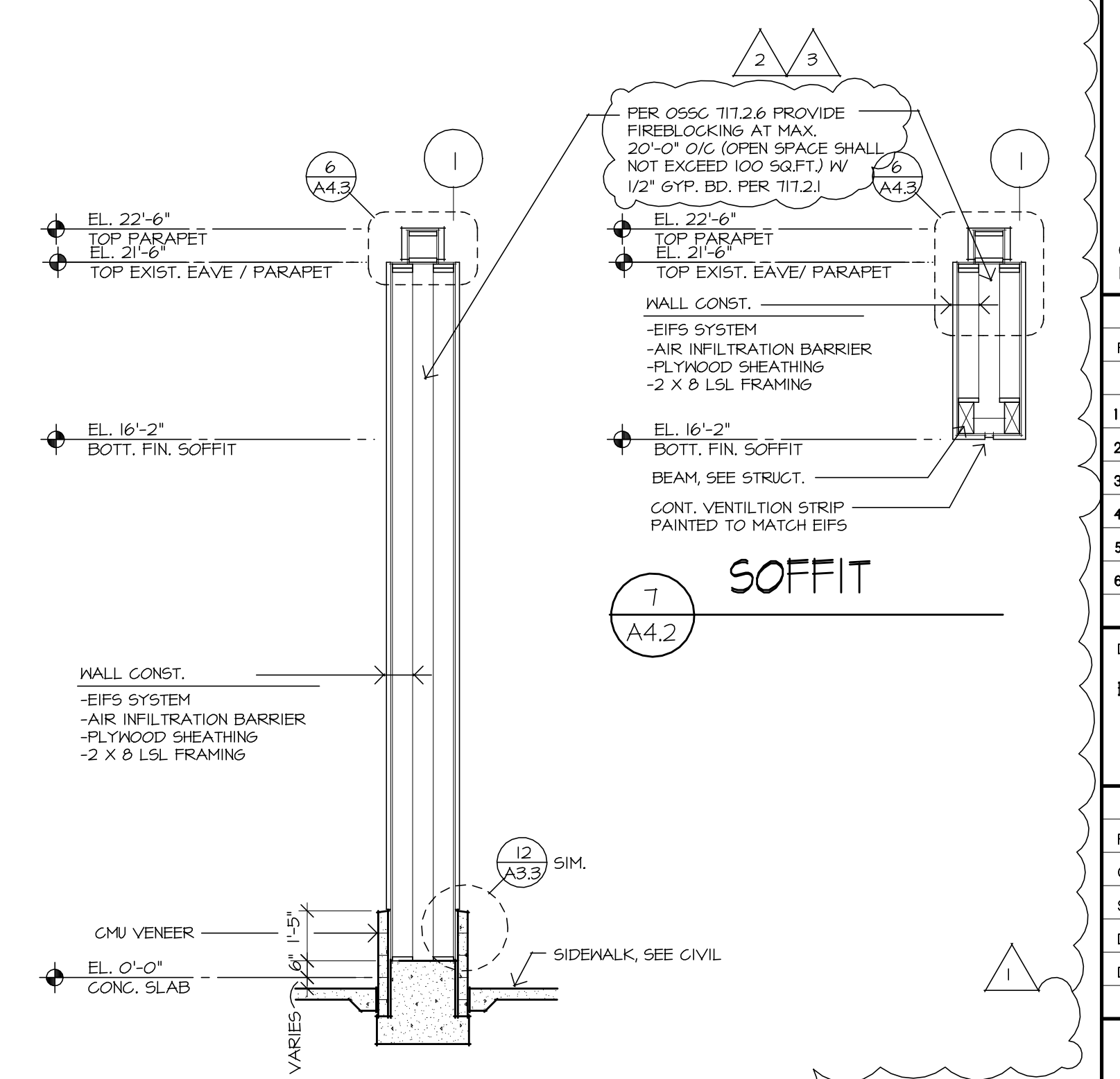
3 BUILDING SECTION
A4.2



8 BUILDING SECTION
A4.2



5 WALL SECTION
A4.2



6 WALL SECTION
A4.2

NOTE: EIFS SYSTEM SHALL BE DRYVIT, INSULATION PLUS MD WITH BACKSTOP NT AIR/WATER BARRIER RESISTIVE COATING OR APPROVED EQUAL. EIFS SYSTEM SHALL MEET ALL OF THE REQUIREMENTS OF 2010 OSGC, SEC. 1403.2 AND 1408.4.2 FOR WEATHER PROTECTION.

EXPANSION & REMODEL FOR...
LITHIA HONDA OF BEND
2225 NE HIGHWAY 20
BEND, OREGON

NEAL HUSTON
& ASSOCIATES
ARCHITECTS INC.



520 SW Powerhouse Dr.
Suite 621
Bend, Oregon 97702
541.389.0991
FAX 541.389.1344
info@nealhuston.com
www.nealhuston.com

Copyright © 2012 by Neal Huston & Associates Architects Inc.

| REVISIONS | DATE | DESCRIPTION |
|-----------|---------|------------------|
| 1 | 4/26/13 | CITY CORRECTIONS |
| 2 | 5/13/13 | APPENDUM #1 |
| 3 | 5/15/13 | CITY CORRECTIONS |
| 4 | | |
| 5 | | |
| 6 | | |

DRAWINGS:
BUILDING & WALL SECTIONS

PROJECT #: 11116
CAD FILE: 11116s1x12
SCALE: 1/8" = 1'-0"
DATE: 1/16/2012
DRAWN BY: CK / JS

CONSTRUCTION SET:
06/11/13
A4.2